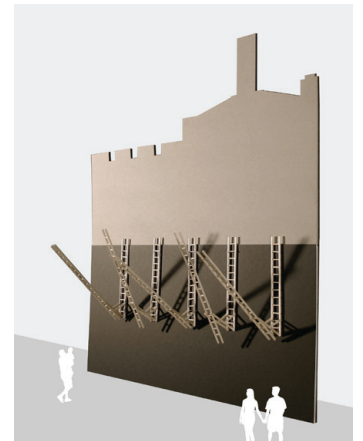
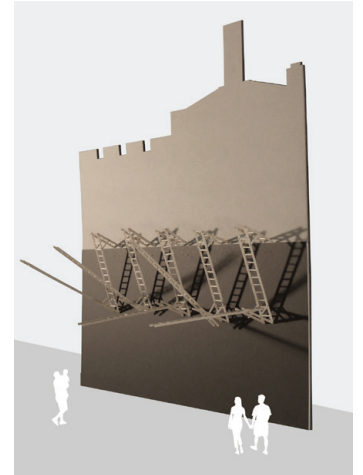
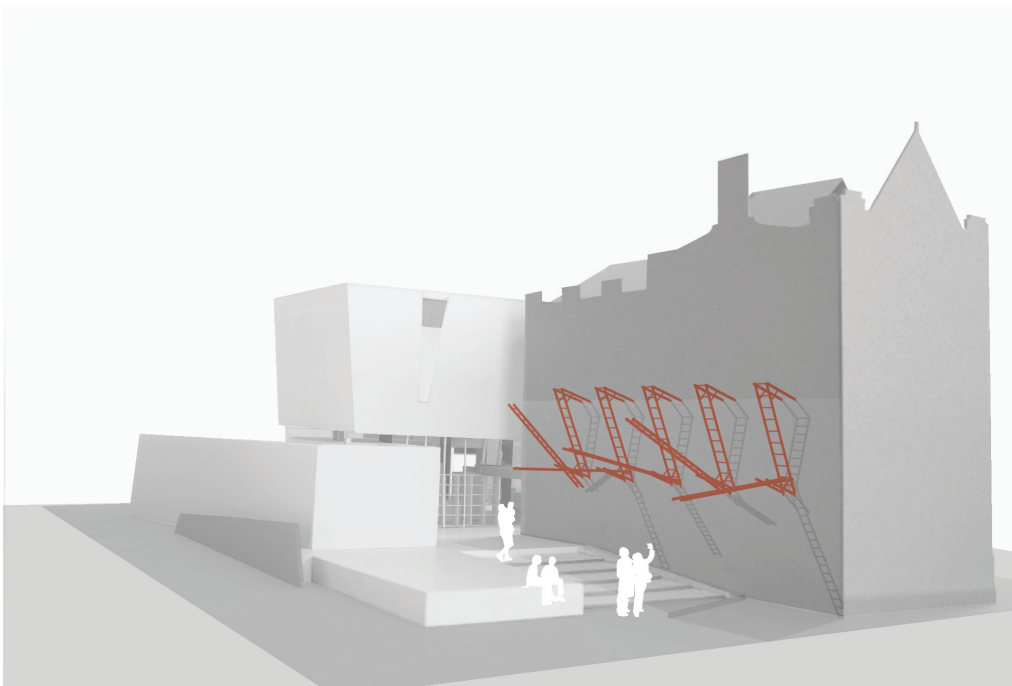


LIMITLESS ACCESS



An ensemble of ladders perform slow motion acrobatics in the aerial space. Hinged to the side wall of the Maitland Regional Art Gallery's historic building this playful installation of free moving ladders translates the rhythm of everyday winds and transforms the common generic ladder into a play of the imagination. At rest the ladders stand vertically with the longer portion standing high above the pivot rung position in what appears an unnatural balance.

Orchestrated by the wind of the day the troupe of ladders create a myriad of ever changing responses to wind action. It is an artwork in a constant state of flux, forever transforming itself in sync with the winds of Maitland.

Artists
Jennifer Turpin

Date
2010

Description
Kinetic wind artwork, 5 units,
8.1metres high x 5metres wide,
concept only

Materials
Steel and carbon fibre

Location
Maitland Regional Gallery

Client
Maitland Regional Gallery

Architect
Paul Berkemeier Architects
and Taylor Thomsom Whitting
Consulting Engineers